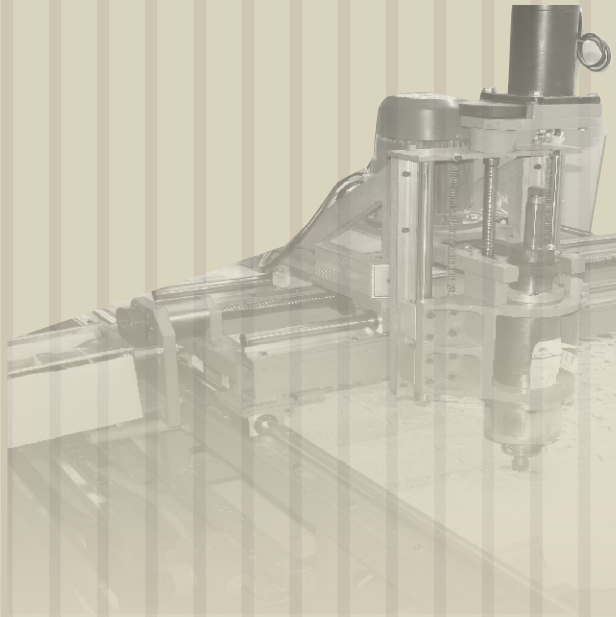
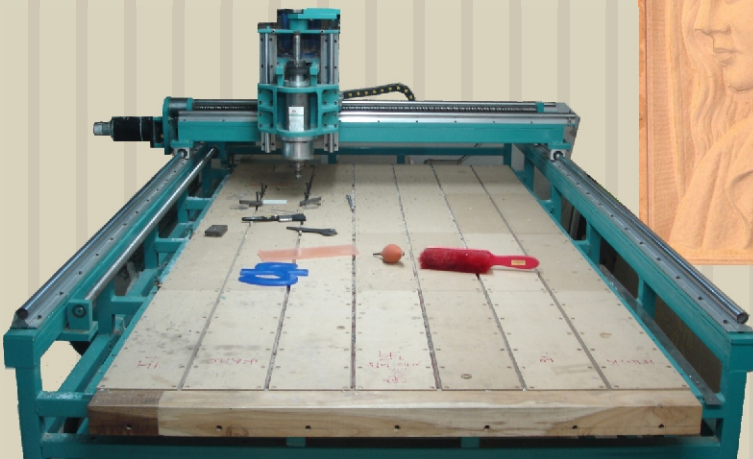
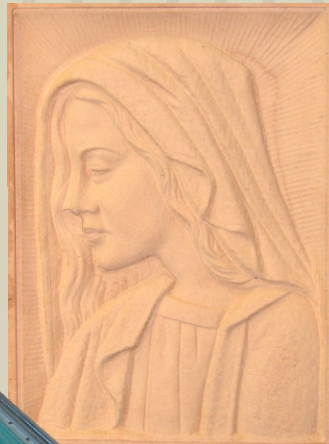


CNC ROUTING MACHINES



- Table Size 100 * 50 Inch
 - X Axis Traverse 48 Inch
 - Y Axis Traverse 96 Inch
 - Z Axis Traverse 8 Inch
- BallScrew All Axis
- Milling Head 90 Degree
- 4th AXIS option
- Spindles upto 60,000 Rpm
- TITAN CNC CONTROLLER with online graphics OR FANUC/SIEMENS/FAGOR CONTROLLER OPTION

- Engraving on Brass, Aluminum
- Routing of Plastic & Wood Materials



With Various Range of CNC Machines, We Provide You With Cost Control, Quality and Extended Support.

ALFA SYSTEMS PVT. LTD.

417 G.I.D.C., Makarpura, Baroda, India 390010.
Tele-Fax: +91-265-2642724 E-mail sales@alfasystems.net
www.alfasystems.net